

Direct Seed

January


Coneflower
Milkweed



Direct Seed

February

Coneflower *
Milkweed



Start Indoors

Coneflower *
Marigold
Oregano
Jalapeño Peppers

Sage
Swiss Chard
Tomatoes

Direct Seed

March

Coneflower *
Milkweed*
Peas

Radishes
Spinach
Swiss Chard

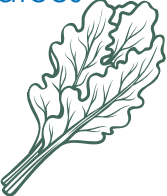
Start Indoors

Collards
Coneflower *
Kale
Lettuce
Marigold
Milkweed *

Oregano
Peppers
Sage
Spinach
Swiss Chard
Tomatoes

Transplant

Swiss Chard



*If Stratified (create false winter by storing seeds in a refrigerator)

Direct Seed

April

Carrots
Cilantro
Collards
Coneflower *
Dill
Garlic Chives
Kale
Lettuce

Marigold
Milkweed *
Peas
Radishes
Sage
Spinach
Swiss Chard

Start Indoors

Collards
Coneflower *
Kale
Lettuce
Marigold
Milkweed *
Oregano

Peppers
Pumpkins
Sage
Spinach
Swiss Chard
Tomatoes

Transplant

Coneflower
Kale
Lettuce
Marigold

Milkweed
Sage
Spinach
Swiss Chard

Harvest

Cilantro
Radishes
Spinach
Swiss Chard



Average Last Frost Date for Indianapolis:
April 26

Direct Seed

May

Basil
Carrots
Cilantro
Collards
Cucumbers
Dill
Garlic Chives
Green Beans
Kale
Lettuce

Marigold
Nasturtium
Pumpkins
Radishes
Sage
Spinach
Squash - all types
Sunflower
Swiss Chard

Transplant

Basil
Cilantro
Coneflower
Kale
Marigold
Milkweed
Nasturtium

Oregano
Peppers
Pumpkins
Sage
Spinach
Squash - all types
Tomatoes

Harvest

Cilantro
Lettuce
Peas

Radishes
Spinach
Swiss Chard

Save Seeds

Cilantro



Direct Seed

June

Carrots
Cilantro
Cucumbers
Green Beans

Nasturtium
Squash - all types
Sunflower

Transplant

Marigold
Milkweed
Oregano

Peppers
Sage
Tomatoes

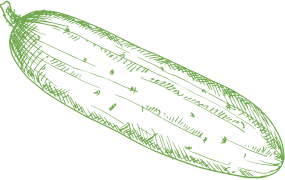
Harvest

Basil
Carrots
Cilantro
Collards
Cucumbers
Garlic Chives
Kale

Lettuce
Marigold
Peas
Radish
Spinach
Zucchini
Swiss Chard

Save Seeds

Cilantro
Lettuce
Peas



Direct Seed

July

Cucumbers
Sunflower



Harvest

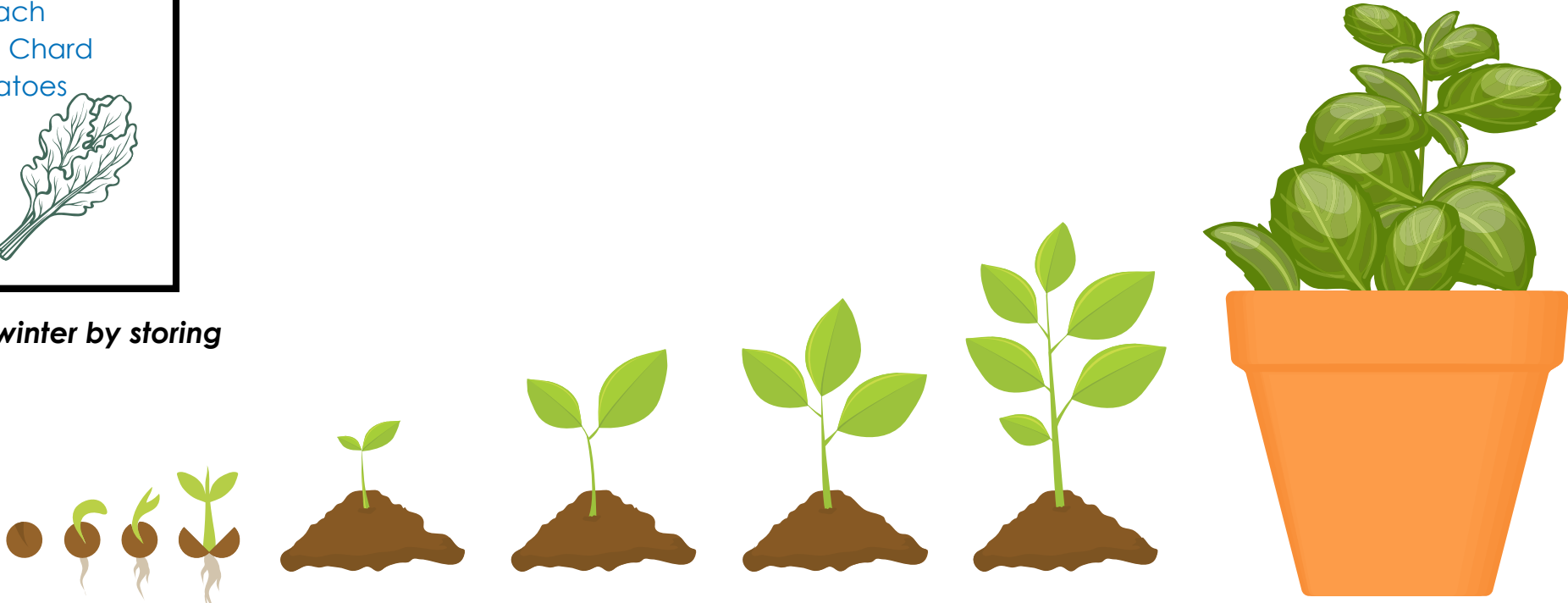
Basil
Bell Peppers
Carrots
Collards
Cucumbers
Garlic Chives
Green Beans
Kale
Marigold
Nasturtium

Oregano
Peas
Radish
Sage
Spinach
Sunflower
Swiss Chard
Tomatoes
Zucchini

Save Seeds

Cilantro
Lettuce
Peas

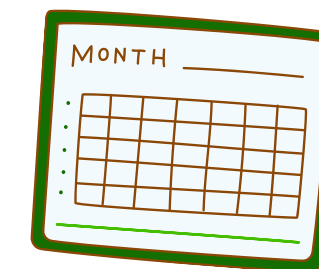
Radishes
Sunflower
Zucchini





Garden Tasks By the Month

These lists are guidelines, not rules. They offer a timeframe of when it is BEST to take action, but exact times will be impacted by growing conditions.



Terms

Direct Seed:
Plant seed directly into outdoor soil. Some plants do not transplant well and do best when directly seeded.

Start Indoors:
Begin growing a seed indoors in a container.

Harden Off:
Transition a plant from indoor to outdoors (so it won't die of shock).

Transplant:
Plant something outside that has already started growing.

Save seeds:
Collect seeds from a plant/fruit that can be used to grow next year.

Start Indoors

Collards
Lettuce
Spinach

Transplant

Collards
Lettuce
Spinach

Direct Seed

Collards
Kale
Lettuce

Harvest


Basil
Carrots
Cucumbers
Garlic Chives
Green Beans
Kale
Marigold
Nasturtium

Oregano
Peppers
Sage
Spinach
Sunflower
Swiss Chard
Tomatoes
Zucchini

Save Seeds

Dill
Green Beans
Nasturtium
Peas
Radishes

Spinach
Sunflowers
Tomatoes
Zucchini



Direct Seed Transplant

Collards
Lettuce
Spinach

Direct Seed

Cilantro
Lettuce
Radish
Spinach

Harvest

Basil
Butternut Squash
Carrots
Cucumbers
Garlic Chives
Green Beans
Kale
Lettuce
Marigold

Nasturtium
Oregano
Peppers
Pumpkins
Radishes
Sage
Sunflower
Swiss Chard
Tomatoes

Save Seeds

Dill
Green Beans
Marigold
Nasturtium
Peas

Radishes
Sunflowers
Tomatoes
Zucchini

Direct Seed

Cilantro
Milkweed

Harvest


Butternut Squash
Cilantro
Collards
Garlic Chives
Kale
Lettuce
Marigold

Nasturtium
Oregano
Pumpkins
Radishes
Sage
Spinach
Swiss Chard

Save Seeds

Butternut Squash
Cilantro
Cucumber
Green Beans
Marigold

Milkweed
Nasturtium
Pumpkins
Sunflower
Tomatoes



Average First Frost Date for Indianapolis: October 16

Direct Seed

Coneflower
Milkweed


Harvest

Cilantro
Collards
Garlic Chives
Kale

Oregano
Sage
Spinach
Swiss Chard

Save Seeds

Butternut Squash
Pumpkin



Direct Seed


Coneflower
Milkweed

Harvest

Collards
Kale

Save Seeds

Butternut Squash
Pumpkins



The IndyPL Seed Library is made possible by Friends of the Library through gifts to The Indianapolis Public Library Foundation.

www.indypl.org/seeds

